

# Iodine Release



## DataSync Release Notes

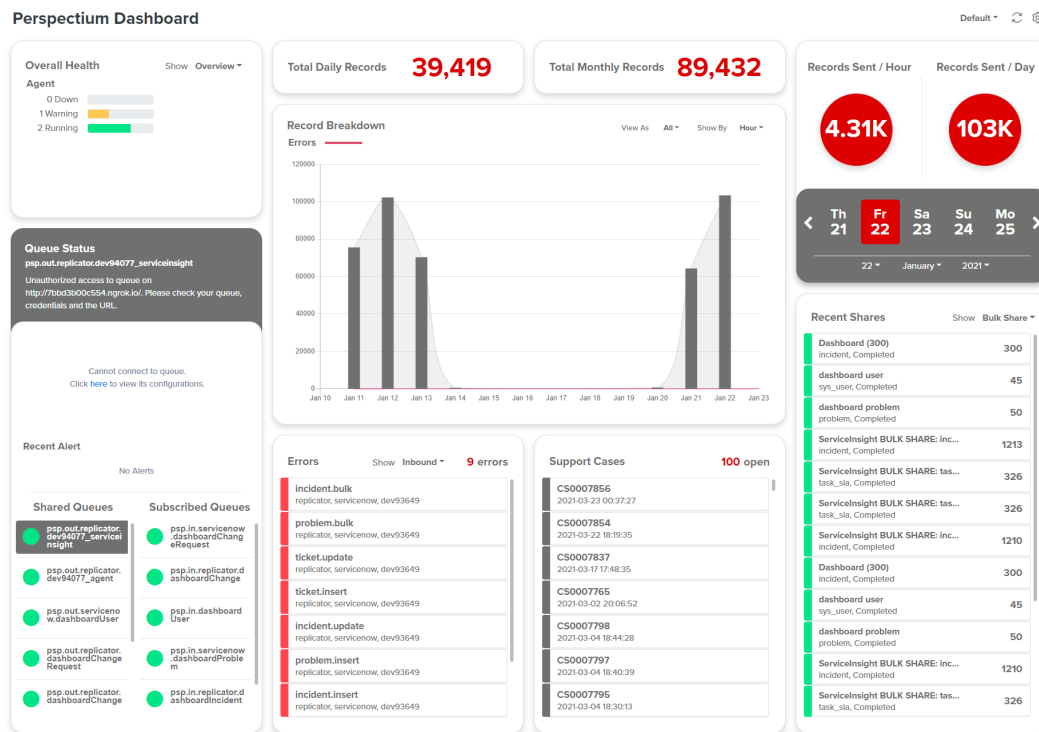
See what's new with all the data integration solutions!

## ServiceBond Release Notes

See what's new in all the integration available to facilitate automated Service Provider to Customer interactions!

## Release Highlights

### DataSync for ServiceNow

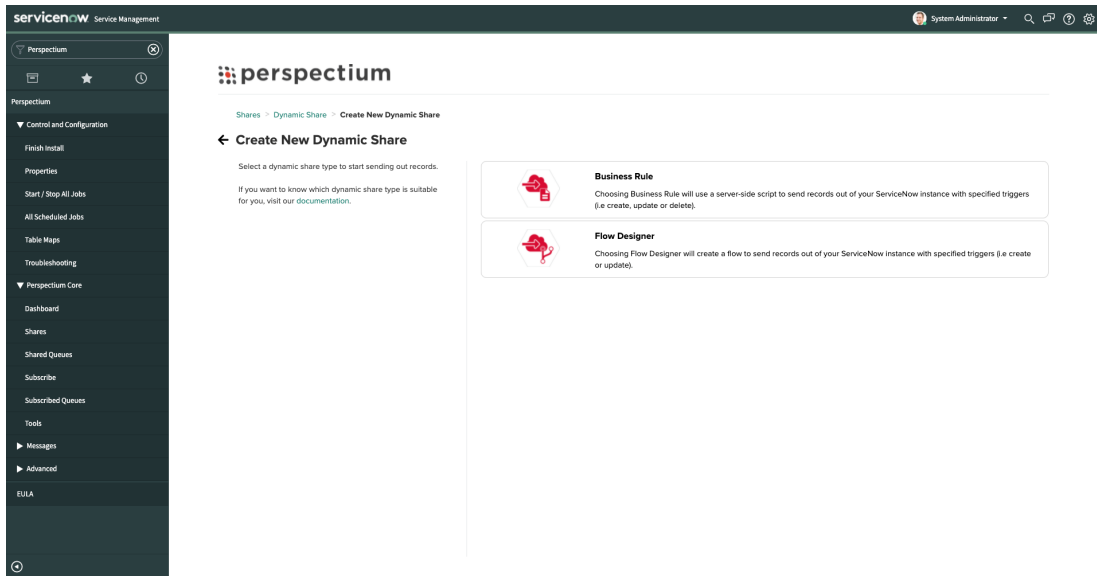


### ✓ Dashboard included in the Core application

Starting with **Iodine 7.0.0**, Dashboard is part of the Core application! Other notable enhancements for Dashboard includes:

- Improved management of instance data in the Dashboard
- Display split data from different shared sources (ServiceBond, ServiceNow, etc)
- Display data based on user time zone settings from ServiceNow instead of local time zone

See [Dashboard](#) to get started!

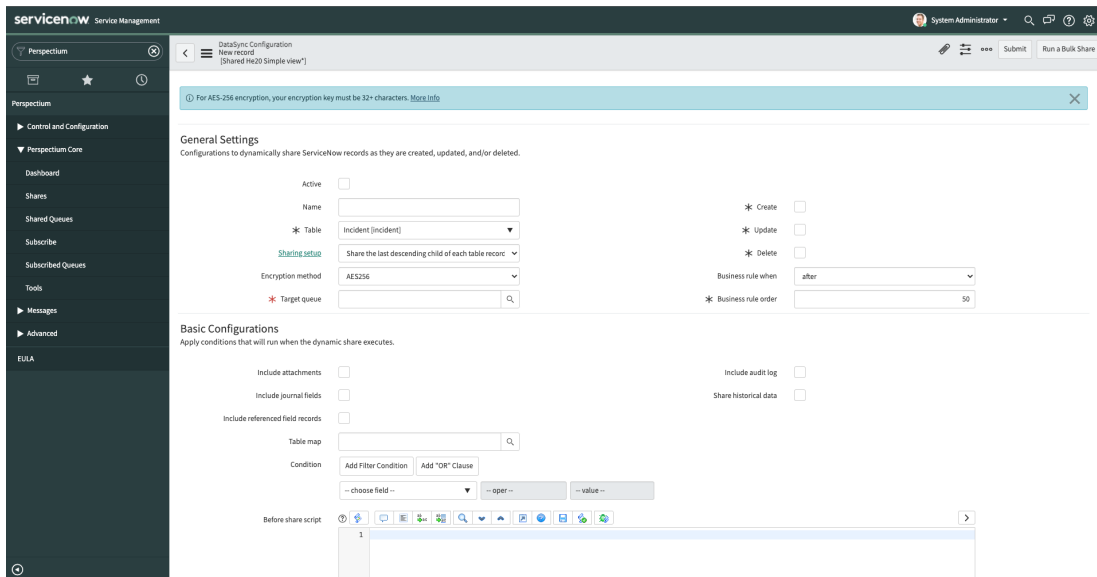


## ✓ Application UI redesigned

In the last [Helium 6.0.0](#) release, we incorporated a [redesigned UI](#) to improve your experience to better navigate through the features you use. In this **Iodine 7.0.0** release, all of Perspective UI pages has been updated and ready for you to have a better navigation experience!

Our other UI/UX enhancements includes...

- Ability to switch between simple and standard view for bulk and dynamic shares
- New subscribe and shared queue form view
- Breadcrumbs added to nested UI pages



## ✓ Performance Improvements

Some of the notable ways performance has improved include:

- Improved performance for AES encryption and decryption
- Have the ability to configure the maximum number of batches used by the Data Cleaner scheduled jobs
- Improved management of bulk shares using filter conditions

...and much more! Explore the [How to Use DataSync for ServiceNow](#) to see all the other changes.

## DataSync Agent

```
<?xml version="1.0" encoding="UTF-8"?>
<config>
  <agent>
    <share />
    <subscribe>
      <task>
        <task_name>azure_blob_storage_agent_subscribe</task_name>
        <message_connection password="password" user="user">https://<customer>.perspectium.net</message_connection>
        <instance_connection password="password" user="user">https://<instance>.service-now.com</instance_connection>
        <handler>com.perspectium.replicator.file.Azure Blob StorageSubscriber</handler>
        <decryption_key>Some decryption key here</decryption_key>
        <abs_container>pspcontainer</abs_container>
        <file_format>json</file_format>
        <connection_string></connection_string>
        <file_format>json</file_format>
        <file_prefix>record</file_prefix>
        <file_suffix>.json</file_suffix>
        <one_record_per_file/>
      </task>
    </subscribe>
    <polling_interval>40</polling_interval>
  </agent>
</config>
```

### ✓ Replicate data to an Azure Blob Storage container

DataSync Agent now support the replication of data from your app to an Azure Blob Storage container. See [Set up the DataSync Agent to share to Azure Blob Storage](#) to learn more!

### ✓ Custom Java Runtime Environment (JRE)

Don't want to install the full Oracle JDK to run the DataSync Agent? [Click here](#) to see how we can provide you an optimized JRE that includes only the necessary java packages for installing and running the Agent.

### ✓ Save your attachments locally or to a cloud

With the Agent, you can now construct your full attachment to be saved locally or to a cloud storage service such as Amazon S3, Azure Blob Storage, or Google Cloud Storage. Check out [saving attachments locally or to a cloud](#) to get started!

### ✓ Other notable enhancements include...

- DataSync Agent will only run with Java 11 and greater. Java 16 is also now supported!
- A DataSync Agent can only point to a single database across all its tasks. This is to prevent issues with data from one Agent being saved to multiple targets
- All tasks must have a unique queue. That is, no queue can be used in more than one task. This is to prevent race conditions that lead to a discrepancy of data

---

## MSP Onboarding

**perspectium**

### Onboarding

To get started, select a customer and set up a service integration.

To get started, select a customer and go through the following:

1. Select a company record that represents your customer in Company. If you do not have an existing Company record, you can create one by clicking the search icon, then click **New**.
2. Set a key identifier for your customer in Customer Key. Your input should be lowercased as this will be used for creating the new shared and subscribed queues' names.
3. Set a queue username and password for your customer. These values will be used as queue credentials for the new shared and subscribed queues created for this customer.
4. If you have domain separation enabled, a field will appear called Domain under System Properties. Set the domain that your customer belongs to in this field. If you do not have an existing Domain record, you can create one by clicking the search icon, then click **New**. For more information on domain separation, click [here](#).

Once completed, a request will be sent to the Perspectium Support Portal to create the queue credentials based on your input.

**Company\***

**Credentials**

Customer Key\*

Create Username\*

Create Password\*

Confirm Password\*

Field cannot be empty

Create a password to connect to the Perspectium Integration Mesh. The password must contain the following:

- At least 8 characters
- At least one uppercase letter
- At least one lower case letter
- At least one special character
- No whitespaces

Passwords match

**Next**

## ✔ Lessen the time to onboard your customers!

With the ease of **MSP Onboarding Automation** feature, see how easy onboarding your customers can be with the following:

- A guided wizard that will help you through the process of setting up a new customer
- View existing process(es) for a given customer as well as add additional process(es)

See [MSP Onboarding](#) to get started!

## ServiceBond Meshlet Mapping

**perspectium**

### Meshlet Mapping

ServiceBond meshlets integrates Perspectium-supported applications with different supported processes. Leverage the following options to configure a ServiceBond meshlet.

To begin the mapping configuration, please select an application and process below.

Application\* --Select--

Process\* --Select--

**General Configuration**

Configure general meshlet settings including configurations to your applications and the Integration Mesh.

**Field Mapping**

Map fields from a source application to a target application.

**Value Mapping**

Map values from a source application to a target application.

## ✔ Configure meshlet mappings and configuration settings through an interface!

Have control of your ServiceBond meshlets through the **Meshlet Mapping** feature, where you can...

- View all of your active ServiceBond meshlets
- Edit and update meshlet mappings and configuration settings through an interface in your ServiceNow instance

See [Meshlet Mapping](#) to get started!

## Release Names and Packaging

---

The releases name are in the format of **<Major>.<Minor/Patch>.<Hotfix>**. The contents of a release package are based on the name and are as follows:

Format	Description
Major	<p>Version of the software that contains significant new features, enhancements, and/or improvements in the user interface (UI) or user experience (UX).</p> <p>Perspectium's release name follows the chemical elements (e.g. Iodine) and are released alphabetically. For example, <b>Iodine 7.0.0</b> is the major release following Helium.</p>
Minor /Patch	<p>A set of changes that contains updates, bug fixes, and/or improvements on the product. This release version <b>can</b> be installed by itself without a major release.</p> <p>(e.g. <b>Iodine 7.1.0</b>)</p>
Hotfix	<p>A set of changes that addresses a specific issue. This release version <b>cannot</b> be installed by itself, it will need to be uploaded on top of a major or patch release. Starting with Helium, hotfixes are cumulative so hotfix 2 will contain fixes in hotfix 1.</p> <p>(e.g. <b>Iodine 7.0.1</b> also known as Iodine Hotfix 1)</p>

## Release Compatibility

---

Perspectium tests **n-2** compatibility with each release e.g. the previous two major releases of the Agent prior to this release has been tested with the latest version of the ServiceNow application.