

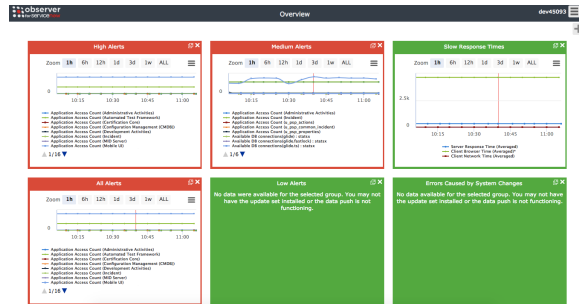
Observer for ServiceNow



Observer has reached its [End of Life](#). For more information, see the Perspectium [End of Life](#) policy or contact [Perspectium Support](#).

Perspectium Observer for ServiceNow is a real time data collection and analytics tool that monitors, aggregates into trends, and provides [alerts](#) on [metrics](#) supplied by your ServiceNow instance in real time. Observer provides you with insight into how your platform is running and protects your systems from degradation over time.

Observer is made up of two components: the ServiceNow application that pushes data to the **Perspectium Integration Mesh**, and the user interface (**Observer UI**) that sits in the **Integration Mesh** for you to see real time data collection and analytics of your instance.



Getting Started with Observer

The following pages cover everything you need to know about getting set up with Observer and making the most of it. If you're just getting started, visit the pages in order for assistance with installing, configuring, and using Observer.

[Install Observer for ServiceNow](#)

[Configure your Observer properties and actions in ServiceNow](#)

[Configure your Observer default settings](#)

[Start using Observer](#)

[Advanced/Optional Observer Configurations](#)

[Observer FAQs](#)